

# Installation Guide

---

## SenseFP M1

Version: 1.0

# 1. About the Device Installation

Please refer to the following recommendations for installation.

## Installation Environment



INSTALL INDOORS  
ONLY



AVOID INSTALLATION  
NEAR  
GLASS WINDOWS



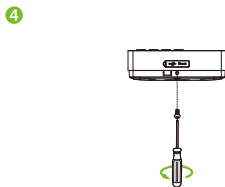
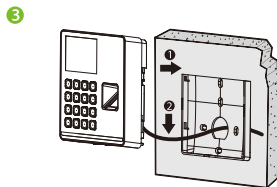
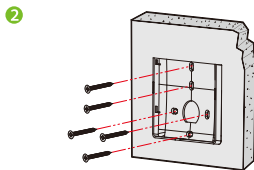
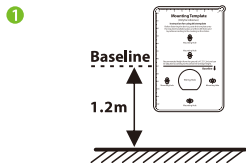
AVOID DIRECT  
SUNLIGHT  
AND EXPOSURE



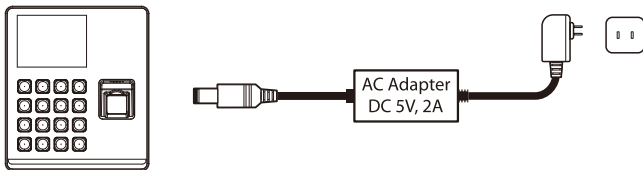
AVOID USE OF ANY  
HEAT SOURCE  
NEAR THE DEVICE

## Install on the wall

- ① Attach the mounting template sticker to the wall, and drill holes according to the mounting paper.
- ② Fix the backplate on the wall with the wall mounting screws.
- ③ After passing the wires through the wiring hole and connecting them to the device, and then snap the device onto the backplate and push it down into place.
- ④ Fasten the device to the backplate with a security screw.



## 2. Power Connection



- Recommended AC adapter: **5V, 2A**
- To share power with other devices, use an AC adapter with higher current ratings.

## 3. Download Center

Scan the QR Code to download the **User Manual**, **Installation Guide** and **Quick Start Guide**.



ZKTeco Industrial Park, No. 32, Industrial Road,  
Tangxia Town, Dongguan, China.

Phone : +86 769 - 82109991

Fax : +86 755 - 89602394

[www.zkteco.com](http://www.zkteco.com)

