

Installation Guide

SpeedPalm-V5L

Version: 1.0

About the Device Installation

Please refer to the following recommendations for installation.



INSTALL INDOORS
ONLY



KEEP EFFECTIVE
DISTANCE OF
0.3 to 2m



AVOID INSTALLATION
NEAR
GLASS WINDOWS



AVOID DIRECT
SUNLIGHT
AND EXPOSURE

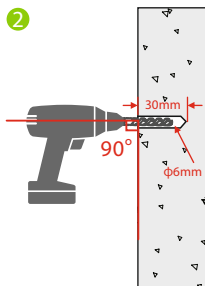
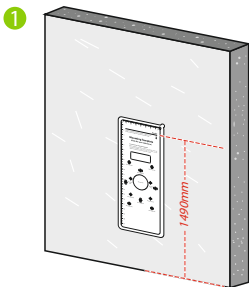


AVOID USE OF ANY
HEAT SOURCE
NEAR THE DEVICE

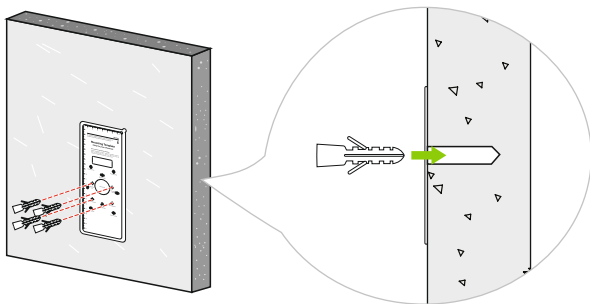
- Avoid direct contact to sunlight for a long time.
- Protect the device from moisture, water, and rain.
- Handle the device with care.
- Ensure that the device is not installed near the sea or in other locations where metal oxidation and rust may develop if the device is exposed for an extended period.
- Protect the device from lightning.
- Avoid using the device in acidic or alkaline environments for extended periods.

How to Install the Device on the Wall?

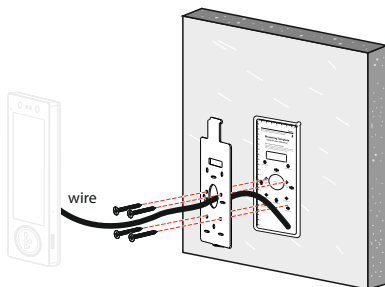
Step 1: Stick the mounting template to the wall and drill holes according to the mounting template.



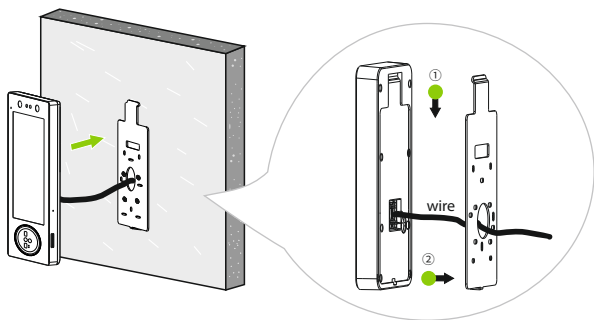
Step 2: Insert the expansion tubes into the mounting holes.



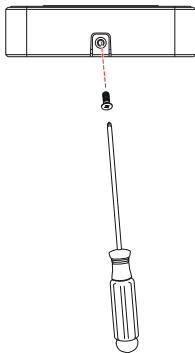
Step 3: Attach the backplate on the wall using the wall mounting screws.



Step 4: Attach the terminal to the backplate.



Step 5: Fasten the terminal to the backplate with a security screw.



Download Center

Scan the QR Code to download the **User Manual**, **Installation Guide** and **Quick Start Guide**.



QR Code (Download Center)

ZKTeco Industrial Park, No. 32, Industrial Road,
Tangxia Town, Dongguan, China.

Phone : +86 769 - 82109991

Fax : +86 755 - 89602394

www.zkteco.com

