

# Installation Guide

---

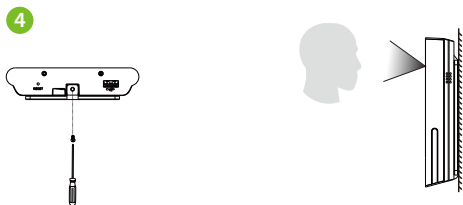
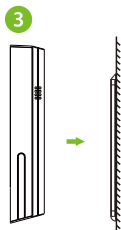
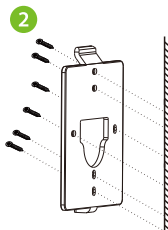
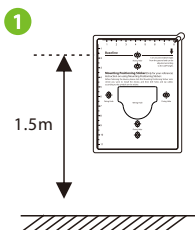
EFace10

Version: 1.0

# How to Install the Device?

## With Backplate:

1. Attach the mounting template sticker to the wall, and drill holes according to the mounting paper.
2. Fix the Backplate on the wall using the wall mounting screws.
3. Attach the device to the Backplate.
4. Fasten it with a security screw.

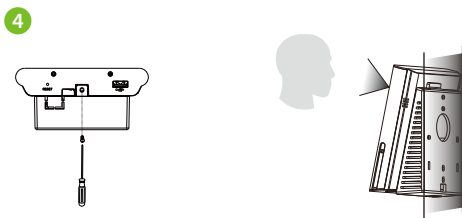
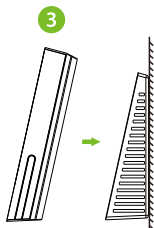
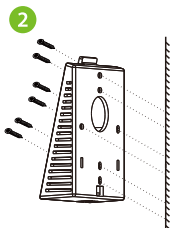
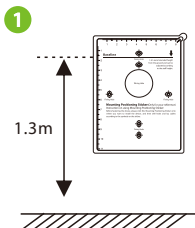


**Note:** Features and parameters with ★ mark are not available in all devices.

## With Back Cover★:

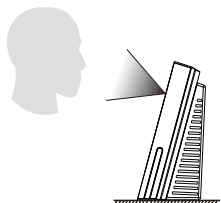
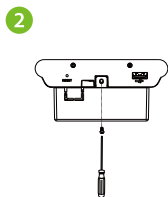
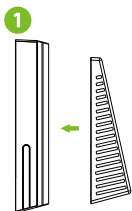
### ● Wall Mount

1. Attach the mounting template sticker to the wall, and drill holes according to the mounting paper.
2. Fix the Back Cover on the wall using the wall mounting screws.
3. Attach the device to the Back Cover.
4. Fasten it with a security screw.



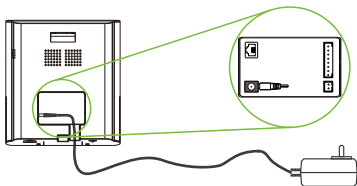
### ● Desktop Placement

1. Attach the Back Cover to the Device.
2. Fasten it with a security screw.



# Wiring Diagram

## Power Connection:

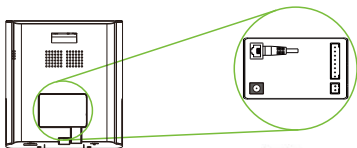


## Recommended AC Adapter

1. 12V  $\pm$  10%, at least 1500mA.
2. To share the power with other devices, use an AC Adapter with higher current ratings.

## Ethernet Connection:

Connect the device and computer software over an Ethernet cable. As shown in the example below:



Default IP address: 192.168.1.201  
Subnet mask: 255.255.255.0



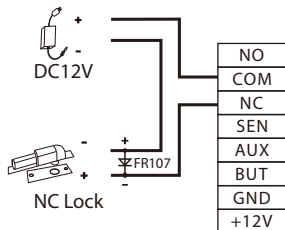
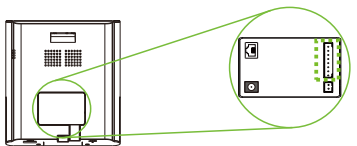
IP address: 192.168.1.130  
Subnet mask: 255.255.255.0

Click on [COMM.] > [Ethernet] > [IP Address], input the IP address and click on [OK].

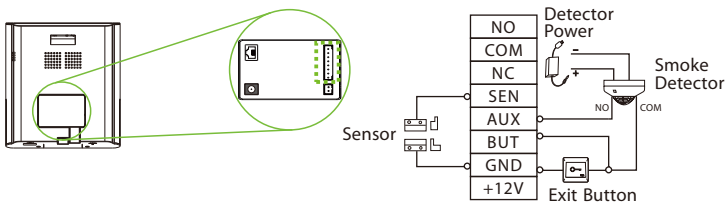
**Note:** In LAN, the IP addresses of the server (PC) and the device must be in the same network segment when connecting to the ZKBioAccess IVS software.

## Lock Relay Connection:

Device not sharing power with the lock



## Door Sensor, Exit Button & Auxiliary Input Connection:



## Download Center

Scan the QR Code to download the **User Manual**, **Installation Guide** and **Quick Start Guide**.



QR Code (Download Center)

ZKTeco Industrial Park, No. 32, Industrial Road,  
Tangxia Town, Dongguan, China.

Phone : +86 769 - 82109991

Fax : +86 755 - 89602394

[www.zkteco.com](http://www.zkteco.com)

